

# PRESS RELEASE

.....  
**PRESS RELEASE**December 5, 2023 || page 1 | 3  
.....**DiGeBaSt research project**

## Proof of origin through marker-free tracing of logs

**Until now, reliably tracing logs to their origin has been difficult to achieve. Researchers at Fraunhofer IPM and their partners have now shown that logs and trunk sections can be identified based on the structure of the cut surfaces. The recent research project developed a marker-free and tamper-proof method. The optical method allows up to 100 percent recognition – even under the rough environment conditions of the timber industry.**

Timber is a valuable natural resource, and its role – particularly in the construction industry – is increasing. One objective of the EU timber regulation is to curb illegal timber trade. This is why the regulation requires wood-processing companies to ensure that timber can be traced to its origin along the entire supply chain. The numbering tags, RFID codes and simple color markings commonly used for identifying timber cannot ensure a reliable proof of origin because they are not tamper-proof. So far, alternative methods of marking logs and trunk sections have failed due to high costs and a lack of digitalization.

### Tamper-proof identification: Cut surfaces as fingerprints

Fraunhofer IPM has been collaborating closely with the Forest Research Institute Baden-Württemberg (FVA) to develop a camera-based tracing method. The research project for the identification of logs and trunk sections has recently been concluded. The Track & Trace Fingerprint method uses the unique structures on cut surfaces like a fingerprint, meaning that no timber marking is required. High-resolution camera images of the cut surfaces are translated into a simple bit sequence, the fingerprint code. This code is matched with a unique ID and stored in a Cloud database. Tracking can thus be achieved by comparing new images of the same area with the corresponding bit sequence. This allows the tamper-proof identification of individual logs and trunk sections, even if the timber is mixed up during harvest and processing.

---

**Editorial notes**

**Holger Kock | Communications and Media** | Fraunhofer Institute for Physical Measurement Techniques IPM | Georges-Köhler-Allee 301 | 79110 Freiburg, Germany | [www.ipm.fraunhofer.de/en](http://www.ipm.fraunhofer.de/en) | Phone +49 761 8857-129 | [holger.kock@ipm.fraunhofer.de](mailto:holger.kock@ipm.fraunhofer.de)

**FRAUNHOFER INSTITUTE FOR PHYSICAL MEASUREMENT TECHNIQUES IPM**

Three different camera systems have been developed for wood processing applications, each to suit specific lighting conditions: a system that is integrated in a forest harvester, a system for use in a sawmill and a hand-held system. There are two reasons why the creation of fingerprint codes generates a vast amount of data: first, the specific structure of the cut surface with knots, growth rings and rough surfaces, and second, the forest environment, which makes the reproduction of log positions impossible. This is why the images are pre-selected in a two-step process using a convolutional neural network (CNN).

**PRESS RELEASE**

December 5, 2023 || page 2 | 3

**High recognition rate**

In a field study, the researchers could show that the fingerprint method is reliable, even in the rough environmental conditions in the forest and the sawmill. A total of 65 cut surfaces were recorded on the forest harvester, at the timber collection point and at the sawmill. The registered sections were then identified at the collection point and at the sawmill by new images being taken at each location respectively. The recognition rate between the forest harvester and the timber collection point was 98.5 percent, in other words the system failed to recognize only a single log. Between the forest harvester and the sawmill, and between the timber collection point and the sawmill, the recognition rate was 100 percent. In the future, the researchers will be working on making the method suitable for other types of wood and for applications along the entire timber processing chain.

**DiGeBaSt project**

The DiGeBaSt project (Digitalization of Felled Logs) ran from April 1, 2021, to March 30, 2023. The affiliated project partners were Forstliche Versuchs- und Forschungsanstalt Baden-Württemberg FVA, Fraunhofer IPM, HSM Hohenloher Spezial-Maschinenbau GmbH & Co. KG, ForstBW A.ö.R. (project coordinator) and Karl Streit GmbH & Co. KG.

The project was funded by the German Federal Ministry of Education and Research (funding reference 0033D013C) as part of its "Digital GreenTech" program within the "Natürlich. Digital.Nachhaltig" action plan (funding reference 02WDG013B). The action plan is embedded into the BMBF's research for sustainability (FONA) strategy.



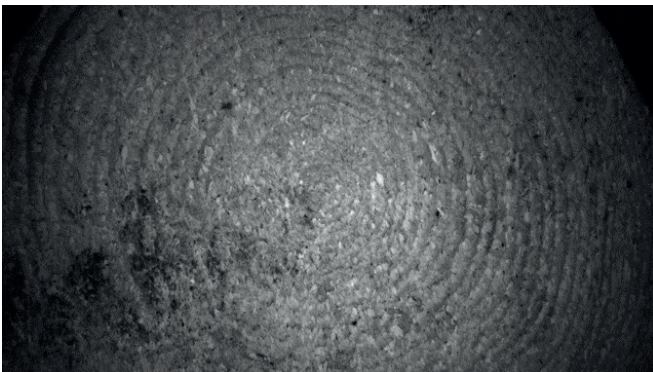


---

**PRESS RELEASE**December 5, 2023 || page 3 | 3

---

Tamper-proof traceability from the harvest to the sawmill: A camera system integrated into the forest harvester records the cut surfaces and generates a fingerprint code for each log. A second image taken later can identify the log based on a unique code. © Fraunhofer IPM



The high-resolution images show the specific microstructure of cut surfaces. The camera images are translated into a simple bit sequence, the fingerprint code. A second image taken of the same surface section allows the log to be identified. Researchers working for the DiGeBaSt project could show that the method works even under the adverse conditions of the forest and the sawmill. © Fraunhofer IPM

---

The **Fraunhofer-Gesellschaft**, based in Germany, is the world's leading applied research organization. By prioritizing key technologies for the future and commercializing its findings in business and industry, it plays a major role in the innovation process. A trailblazer and trendsetter in innovative developments and research excellence, it is helping shape our society and our future. Founded in 1949, the Fraunhofer-Gesellschaft currently operates 76 institutes and research units throughout Germany. Around 30,800 employees, predominantly scientists and engineers, work with an annual research budget of roughly €3.0 billion, €2.6 billion of which is designated as contract research.

**Other contacts**

**Dr. Tobias Schmid-Schirling** | Group Manager Inline Vision Systems | Phone +49 761 8857- 281 | [tobias.schmid-schirling@ipm.fraunhofer.de](mailto:tobias.schmid-schirling@ipm.fraunhofer.de)  
Fraunhofer Institute for Physical Measurement Techniques IPM | Georges-Köhler-Allee 301 | 79110 Freiburg, Germany | [www.ipm.fraunhofer.de/en](http://www.ipm.fraunhofer.de/en)